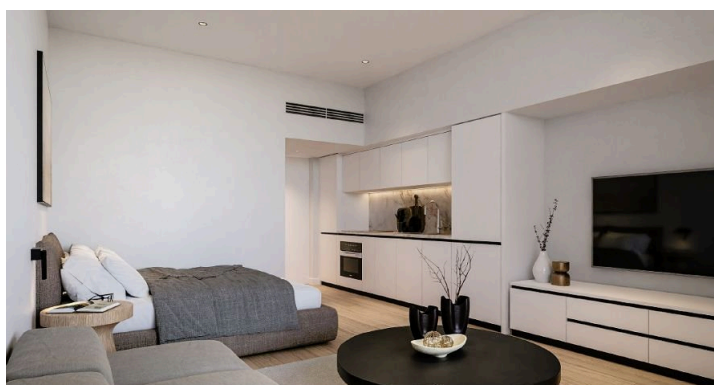


Joanmarino Real Estate



OFF PLAN - BUILDING FOR SALE - HISTORICAL CENTER BFS-182

€1,700,000


- (Off Plan) Entire Building comprised of 9-studio apartments in Limassol's Historical Center.
- Building rented out on a 5-year lease agreement to corporate tenant for €140.000 per year.
- Annual Yield of 8.2%
- NO VAT or TRANSFER FEES are applicable! "Plot is under an SPV"

Nearby Amenities:

- Olympion Beach - 200m
- Access to Highway - 500m
- Gladstonos Street - 300m
- Anexartisias Street - 500m
- Molos Promenade - 350m
- Limassol Marina - 500m

Building Specification:

 Studio

 284 m²