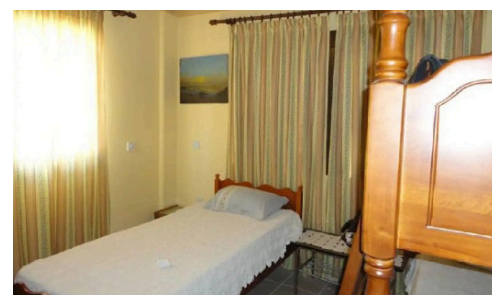
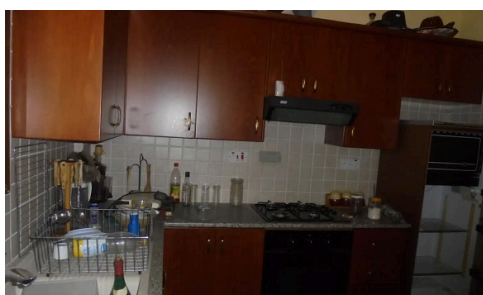
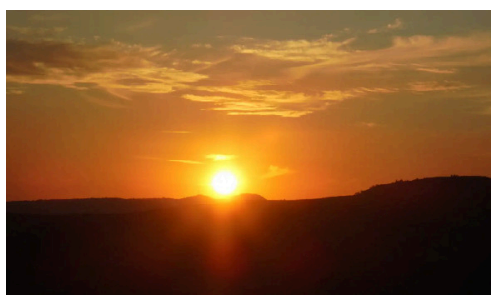


PFS-1036



## 10,500 sq. agricultural land with a 2-bedroom house for sale in Laneia.

€800,000

 Laneia, Limassol

This appealing cottage is set on a large plot and offers around 100 sq.m. of living space, making it well suited for those looking for a quiet countryside retreat. It is approximately 20 minutes from Limassol, with planned road improvements expected to shorten the commute, and it will also be closer to an international school and the upcoming university in Palodia. The property comes furnished, includes all kitchen appliances, and features air


Area

 10500 m<sup>2</sup>

**Joanmarino Real Estate**



**Kristia Stephanidou**

 (+357) 96130101

 joanmarinorealestate@gmail.com



The information in this E-mail and any documents and files transmitted with it are confidential and for the use of the intended recipient only. If you are not the intended recipient, you may not use, copy, distribute or deliver to anyone this message (or any part of its contents) or take any action in reliance on it.