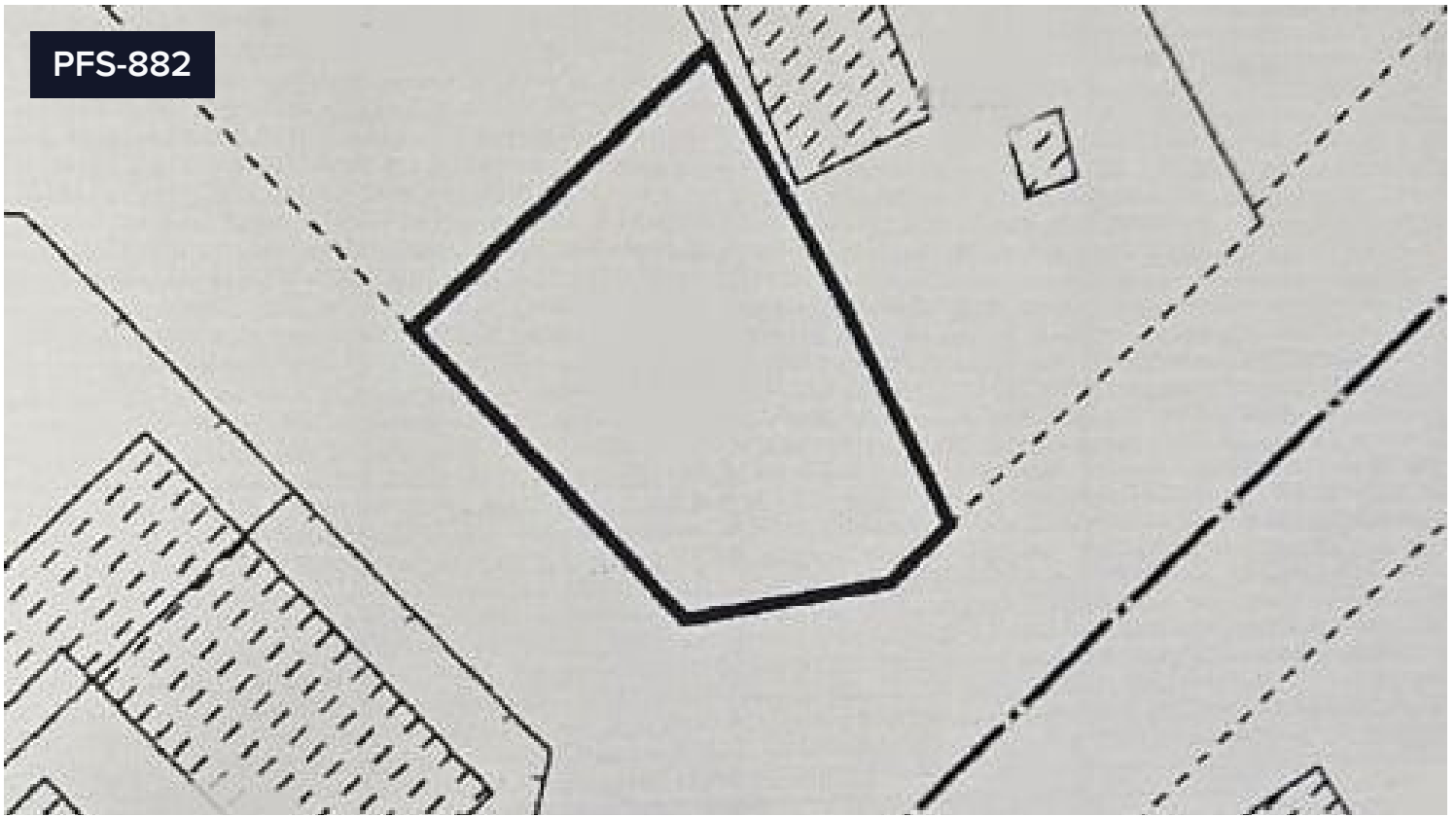


PFS-882



420 SQ.M – COMMERCIAL PLOT – ON MAKARIOU AVENUE – APOSTOLOS ANDREAS AREA

€1,000,000

📍 Apostolos Andreas, Limassol

The property is ideally situated close to a plethora of amenities and services such as supermarkets, schools, shops, restaurants etc. Is a corner plot on Makariou Avenue in Apostolos Andreas area of Limassol city, it is considered as an ideal choice for a land developer? The property falls within the Residential Zone Eβ2 having a building density of 180%, Commercial use, Title Deeds

Planning Zone: Eβ2

Building Density: 180%

Coverage: 50%

Floors Allowed: 6

Area

[] 420 m²

Joanmarino Real Estate



Kristia Stephanidou

☎ (+357) 96130101

✉ joanmarinorealestate@gmail.com



The information in this E-mail and any documents and files transmitted with it are confidential and for the use of the intended recipient only. If you are not the intended recipient, you may not use, copy, distribute or deliver to anyone this message (or any part of its contents) or take any action in reliance on it.