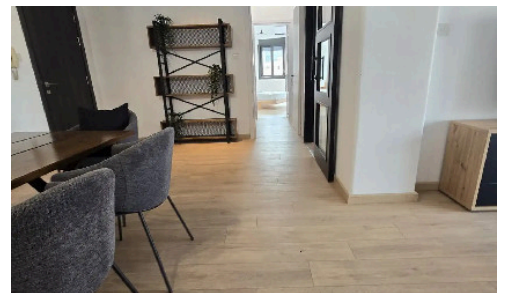
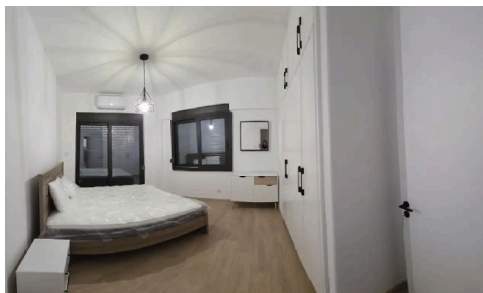
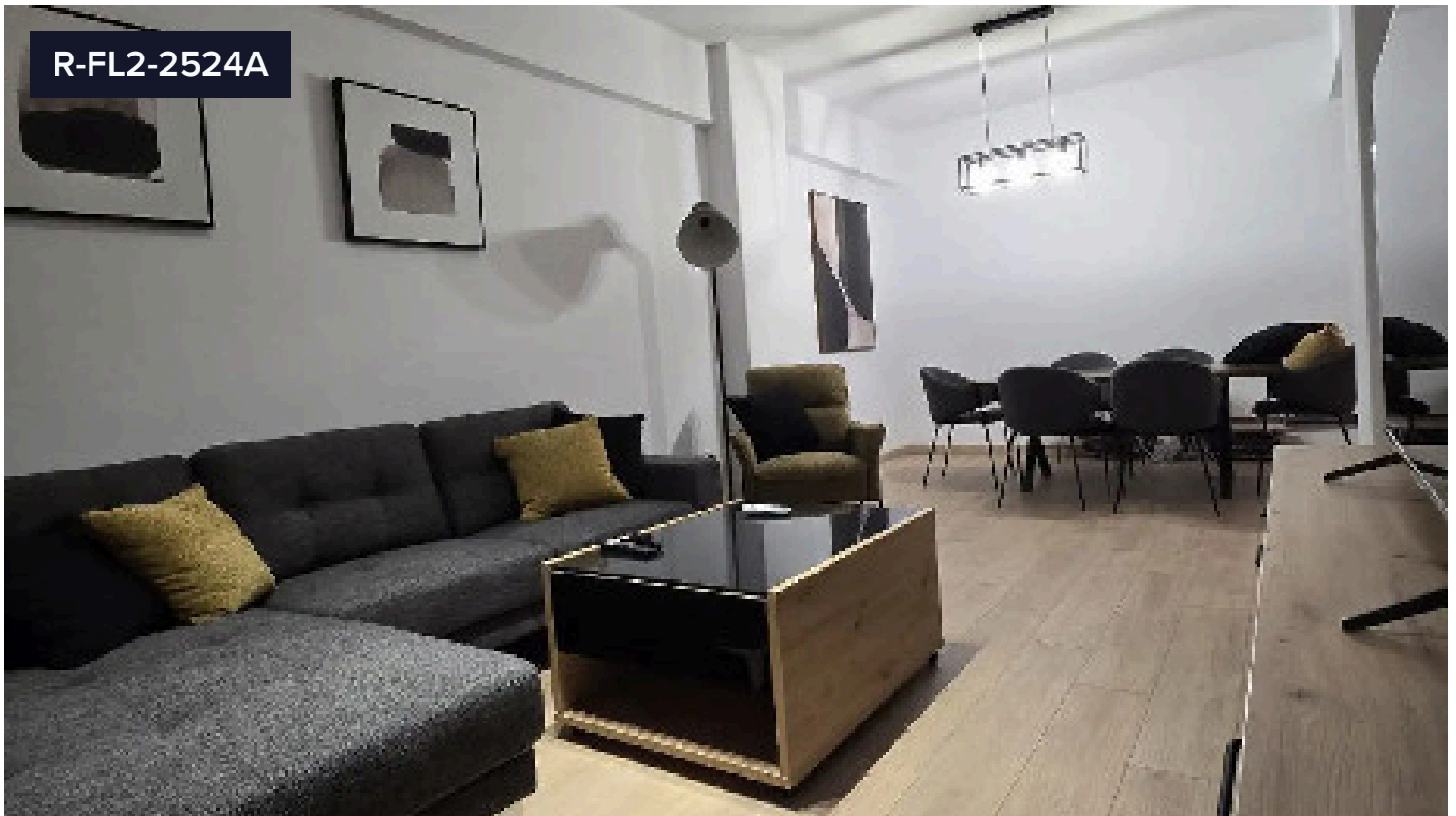


R-FL2-2524A



Modern, Energy-Efficient 2-Bedroom Apartment €1,700 /month in Mesa Geitonia – Prime Location

📍 Mesa Geitonia, Limassol

This fully renovated and energy-upgraded two-bedroom apartment is situated in one of Limassol's most desirable areas, Mesa Geitonia. Ideally located near Sklavenitis supermarket, it offers easy access to the highway and is just minutes from the city centre. Supermarkets, pharmacies, and bakeries are all within close proximity.

The property is positioned only 50 metres from Brain Rocket and directly opposite Windsor Brokers, making it an

Bedrooms

 2

Bathrooms

 1

Covered

 96 m²

Joanmarino Real Estate



Kristia Stephanidou

📞 (+357) 96130101

✉️ joanmarinorealestate@gmail.com



The information in this E-mail and any documents and files transmitted with it are confidential and for the use of the intended recipient only. If you are not the intended recipient, you may not use, copy, distribute or deliver to anyone this message (or any part of its contents) or take any action in reliance on it.